

**SCREENING REPORT FOR AN ENVIRONMENTAL AUTHORIZATION AS
REQUIRED BY THE 2014 EIA REGULATIONS – PROPOSED SITE
ENVIRONMENTAL SENSITIVITY**

EIA Reference number: TBC

Project name: NGQONDO WSS


Project title: NGQONDO WSS

Date screening report generated: 01/09/2025 12:48:10

Applicant: CHRIS HANI DISTRICT MUNICIPALITY

Compiler: INDWE ENVIRONMENTAL CONSULTING - Megan Hugo

Compiler signature:



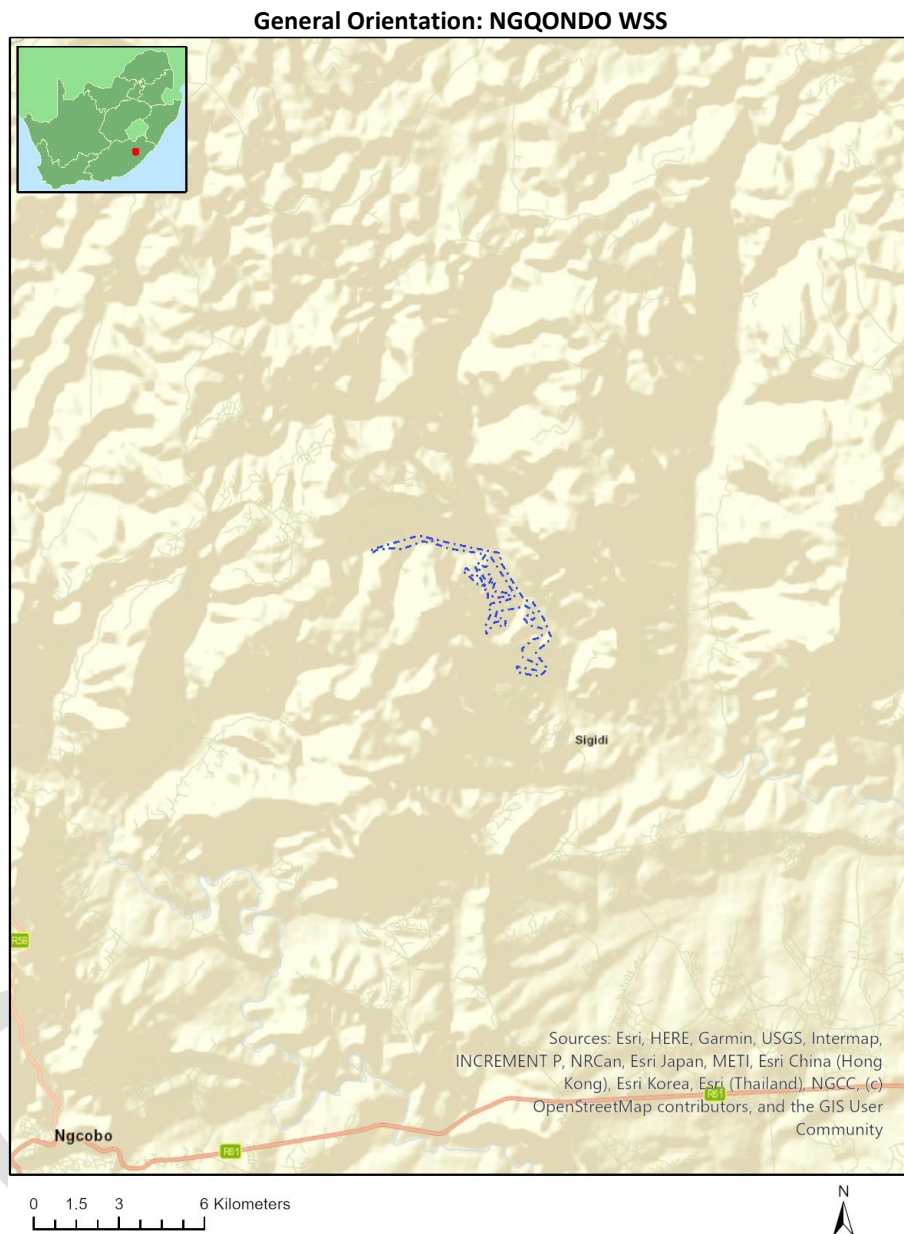
Application Category: Utilities Infrastructure|Pipelines|Water|Fresh_Storm Water

Table of Contents

Proposed Project Location	3
Orientation map 1: General location	3
Map of proposed site and relevant area(s)	4
Cadastral details of the proposed site	4
Wind and Solar developments with an approved Environmental Authorisation or applications under consideration within 30 km of the proposed area	6
Environmental Management Frameworks relevant to the application	6
Environmental screening results and assessment outcomes	6
Relevant development incentives, restrictions, exclusions or prohibitions	6
Proposed Development Area Environmental Sensitivity	6
Specialist assessments identified	7
Results of the environmental sensitivity of the proposed area	8
MAP OF RELATIVE AGRICULTURE THEME SENSITIVITY	8
MAP OF RELATIVE ANIMAL SPECIES THEME SENSITIVITY	9
MAP OF RELATIVE AQUATIC BIODIVERSITY THEME SENSITIVITY	10
MAP OF RELATIVE ARCHAEOLOGICAL AND CULTURAL HERITAGE THEME SENSITIVITY	11
MAP OF RELATIVE CIVIL AVIATION THEME SENSITIVITY	12
MAP OF RELATIVE DEFENCE THEME SENSITIVITY	13
MAP OF RELATIVE PALEONTOLOGY THEME SENSITIVITY	14
MAP OF RELATIVE PLANT SPECIES THEME SENSITIVITY	15
MAP OF RELATIVE TERRESTRIAL BIODIVERSITY THEME SENSITIVITY	16

Proposed Project Location

Orientation map 1: General location



Map of proposed site and relevant area(s)



Cadastral details of the proposed site

Property details:

No	Farm Name	Farm/ Erf No	Portion	Latitude	Longitude	Property Type
1	LOWER SITOLENI	15	0	31°33'2.87S	28°8'51.67E	Erven
2	LOWER SITOLENI	27	0	31°32'35.13S	28°9'23.32E	Erven
3	LOWER SITOLENI	41	0	31°32'23.54S	28°9'33.35E	Erven
4	LOWER SITOLENI	42	0	31°32'16.92S	28°9'26.72E	Erven
5	LOWER SITOLENI	43	0	31°32'13.13S	28°9'24.33E	Erven
6	LOWER SITOLENI	47	0	31°32'0.03S	28°9'13.68E	Erven
7	LOWER SITOLENI	48	0	31°31'59.06S	28°9'3.26E	Erven
8	LOWER SITOLENI	50	0	31°31'56.03S	28°8'49.31E	Erven
9	LOWER SITOLENI	51	0	31°31'48.57S	28°8'57.78E	Erven
10	LOWER SITOLENI	52	0	31°31'47.55S	28°8'39.68E	Erven
11	LOWER SITOLENI	53	0	31°31'43.54S	28°8'48.52E	Erven
12	LOWER SITOLENI	54	0	31°31'39.53S	28°8'52.73E	Erven
13	LOWER SITOLENI	55	0	31°31'32.65S	28°8'39.91E	Erven
14	LOWER	56	0	31°31'31.61S	28°8'46.61E	Erven

	SITOLENI					
15	LOWER SITOLENI	61	0	31°31'23.61S	28°8'44.63E	Erven
16	LOWER SITOLENI	63	0	31°31'18.26S	28°8'38.67E	Erven
17	LOWER SITOLENI	64	0	31°31'20.97S	28°8'32.99E	Erven
18	LOWER SITOLENI	65	0	31°31'18.18S	28°8'25.75E	Erven
19	LOWER SITOLENI	66	0	31°31'8.26S	28°8'24.81E	Erven
20	LOWER SITOLENI	67	0	31°31'7.55S	28°8'17.33E	Erven
21	LOWER SITOLENI	68	0	31°31'9.38S	28°8'8.09E	Erven
22	LOWER SITOLENI	69	0	31°31'1.62S	28°8'8.52E	Erven
23	LOWER SITOLENI	71	0	31°30'56.89S	28°8'20.92E	Erven
24	LOWER SITOLENI	72	0	31°31'1.61S	28°8'33.34E	Erven
25	LOWER SITOLENI	87	0	31°30'58.08S	28°7'56.22E	Erven
26	LOWER SITOLENI	88	0	31°31'9.13S	28°7'57.59E	Erven
27	LOWER SITOLENI	89	0	31°31'6.37S	28°7'50.57E	Erven
28	LOWER SITOLENI	90	0	31°30'58.73S	28°7'50.62E	Erven
29	LOWER SITOLENI	91	0	31°30'53.41S	28°7'42.02E	Erven
30	LOWER SITOLENI	92	0	31°30'59.13S	28°7'41.32E	Erven
31	LOWER SITOLENI	94	0	31°30'57.9S	28°7'32.51E	Erven
32	LOWER SITOLENI	95	0	31°30'50.59S	28°7'32.46E	Erven
33	LOWER SITOLENI	96	0	31°30'52.5S	28°7'25.88E	Erven
34	LOWER SITOLENI	97	0	31°30'57.59S	28°7'19.91E	Erven
35	LOWER SITOLENI	98	0	31°30'51.63S	28°7'17.63E	Erven
36	LOWER SITOLENI	99	0	31°30'47.23S	28°7'11.2E	Erven
37	LOWER SITOLENI	100	0	31°30'47.26S	28°7'1.48E	Erven
38	LOWER SITOLENI	101	0	31°30'49.15S	28°6'51.58E	Erven
39	LOWER SITOLENI	102	0	31°30'53.48S	28°6'54.85E	Erven
40	LOWER SITOLENI	103	0	31°31'0.63S	28°6'47.96E	Erven
41	LOWER SITOLENI	104	0	31°31'23.36S	28°7'58.25E	Erven
42	LOWER SITOLENI	106	0	31°31'40.88S	28°8'17.8E	Erven

Development footprint¹ vertices:
No development footprint(s) specified.

Wind and Solar developments with an approved Environmental Authorisation or applications under consideration within 30 km of the proposed area

No nearby wind or solar developments found.

Environmental Management Frameworks relevant to the application

No intersections with EMF areas found.

Environmental screening results and assessment outcomes

The following sections contain a summary of any development incentives, restrictions, exclusions or prohibitions that apply to the proposed development site as well as the most environmental sensitive features on the site based on the site sensitivity screening results for the application classification that was selected. The application classification selected for this report is:

Utilities Infrastructure | Pipelines | Water | Fresh_Storm Water.

Relevant development incentives, restrictions, exclusions or prohibitions

The following development incentives, restrictions, exclusions or prohibitions and their implications that apply to this site are indicated below.

Incentive, restriction or prohibition	Implication
Strategic Transmission Corridor-Eastern Corridor	https://screening.environment.gov.za/ScreeningDownloads/DevelopmentZones/Combined_EGI.pdf
Strategic Gas Pipeline Corridors-Phase 7: Coega to Richards Bay	https://screening.environment.gov.za/ScreeningDownloads/DevelopmentZones/Combined_GAS.pdf

Proposed Development Area Environmental Sensitivity

The following summary of the development site environmental sensitivities is identified. Only the highest environmental sensitivity is indicated. The footprint environmental sensitivities for the proposed development footprint as identified, are indicative only and must be verified on site by a suitably qualified person before the specialist assessments identified below can be confirmed.

Theme	Very High	High	Medium	Low
-------	-----------	------	--------	-----

¹ "development footprint", means the area within the site on which the development will take place and includes all ancillary developments for example roads, power lines, boundary walls, paving etc. which require vegetation clearance or which will be disturbed and for which the application has been submitted.

	sensitivity	sensitivity	sensitivity	sensitivity
Agriculture Theme	X			
Animal Species Theme		X		
Aquatic Biodiversity Theme	X			
Archaeological and Cultural Heritage Theme				X
Civil Aviation Theme				X
Defence Theme				X
Paleontology Theme	X			
Plant Species Theme			X	
Terrestrial Biodiversity Theme	X			

Specialist assessments identified

Based on the selected classification, and the known impacts associated with the proposed development, the following list of specialist assessments have been identified for inclusion in the assessment report. It is the responsibility of the EAP to confirm this list and to motivate in the assessment report, the reason for not including any of the identified specialist study including the provision of photographic evidence of the site situation.

No	Specialist assessment	Assessment Protocol
1	Agricultural Impact Assessment	https://screening.environment.gov.za/ScreeningDownloads/AssessmentProtocols/Gazetted_General_Agriculture_Assessment_Protocols.pdf
2	Archaeological and Cultural Heritage Impact Assessment	https://screening.environment.gov.za/ScreeningDownloads/AssessmentProtocols/GuidanceforHIA.pdf
3	Palaeontology Impact Assessment	https://screening.environment.gov.za/ScreeningDownloads/AssessmentProtocols/GuidanceforPIA.pdf
4	Terrestrial Biodiversity Impact Assessment	https://screening.environment.gov.za/ScreeningDownloads/AssessmentProtocols/Gazetted_Terrestrial_Biodiversity_Assessment_Protocols.pdf
5	Aquatic Biodiversity Impact Assessment	https://screening.environment.gov.za/ScreeningDownloads/AssessmentProtocols/Gazetted_Aquatic_Biodiversity_Assessment_Protocols.pdf
6	Geotechnical Assessment	https://screening.environment.gov.za/ScreeningDownloads/AssessmentProtocols/Gazetted_General_Requirement_Assessment_Protocols.pdf
7	Socio-Economic Assessment	https://screening.environment.gov.za/ScreeningDownloads/AssessmentProtocols/Gazetted_General_Requirement_Assessment_Protocols.pdf
8	Plant Species Assessment	https://screening.environment.gov.za/ScreeningDownloads/AssessmentProtocols/Gazetted_Plant_Species_Assessment_Protocols.pdf
9	Animal Species Assessment	https://screening.environment.gov.za/ScreeningDownloads/AssessmentProtocols/Gazetted_Animal_Species_Assessment_Protocols.pdf

Results of the environmental sensitivity of the proposed area.

The following section represents the results of the screening for environmental sensitivity of the proposed site for relevant environmental themes associated with the project classification. It is the duty of the EAP to ensure that the environmental themes provided by the screening tool are comprehensive and complete for the project. Refer to the disclaimer.

MAP OF RELATIVE AGRICULTURE THEME SENSITIVITY

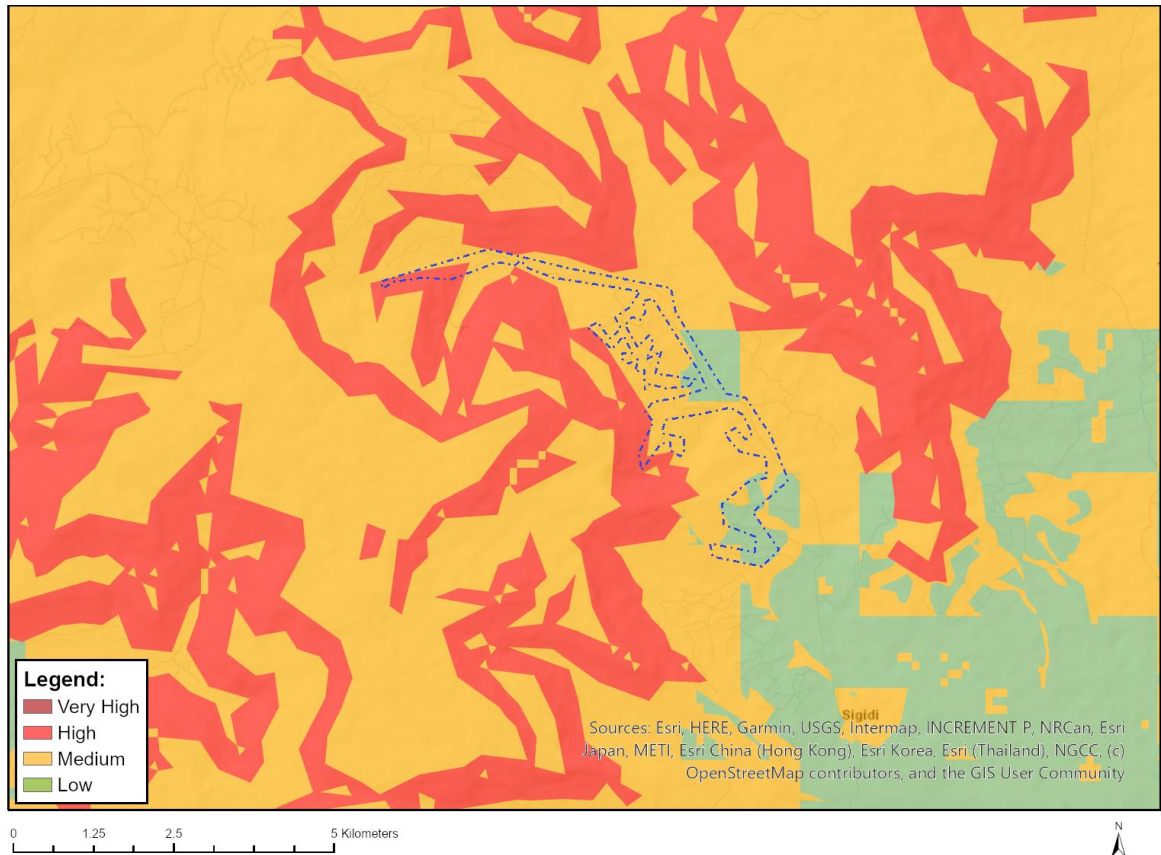


Very High sensitivity	High sensitivity	Medium sensitivity	Low sensitivity
X			

Sensitivity Features:

Sensitivity	Feature(s)
High	Subsistence_Farming_1
High	08. Moderate
High	09. Moderate-High
High	10. Moderate-High
Low	03. Low-Very low
Low	04. Low-Very low
Low	05. Low
Medium	06. Low-Moderate
Medium	07. Low-Moderate
Very High	Cofimvaba-Qumbu PAA

MAP OF RELATIVE ANIMAL SPECIES THEME SENSITIVITY



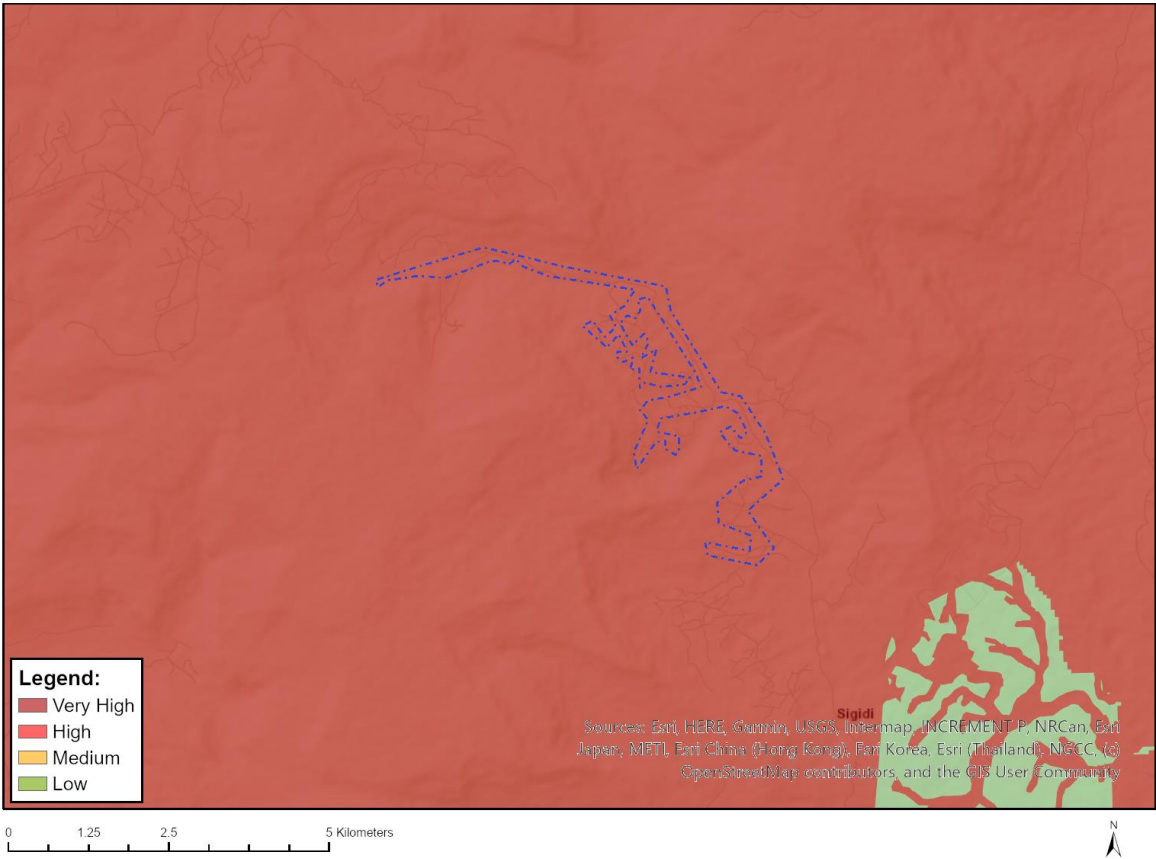
Where only a sensitive plant unique number or sensitive animal unique number is provided in the screening report and an assessment is required, the environmental assessment practitioner (EAP) or specialist is required to email SANBI at eiadatarequests@sanbi.org.za listing all sensitive species with their unique identifiers for which information is required. The name has been withheld as the species may be prone to illegal harvesting and must be protected. SANBI will release the actual species name after the details of the EAP or specialist have been documented.

Very High sensitivity	High sensitivity	Medium sensitivity	Low sensitivity
	X		

Sensitivity Features:

Sensitivity	Feature(s)
High	Aves-Gyps coprotheres
Low	Subject to confirmation
Medium	Aves-Podica senegalensis
Medium	Aves-Stephanoaetus coronatus
Medium	Insecta-Chrysoritis lyncurium
Medium	Mammalia-Cercopithecus albogularis labiatus
Medium	Mammalia-Chrysospalax villosus
Medium	Mammalia-Dendrohyrax arboreus
Medium	Mammalia-Hydricitis maculicollis

MAP OF RELATIVE AQUATIC BIODIVERSITY THEME SENSITIVITY

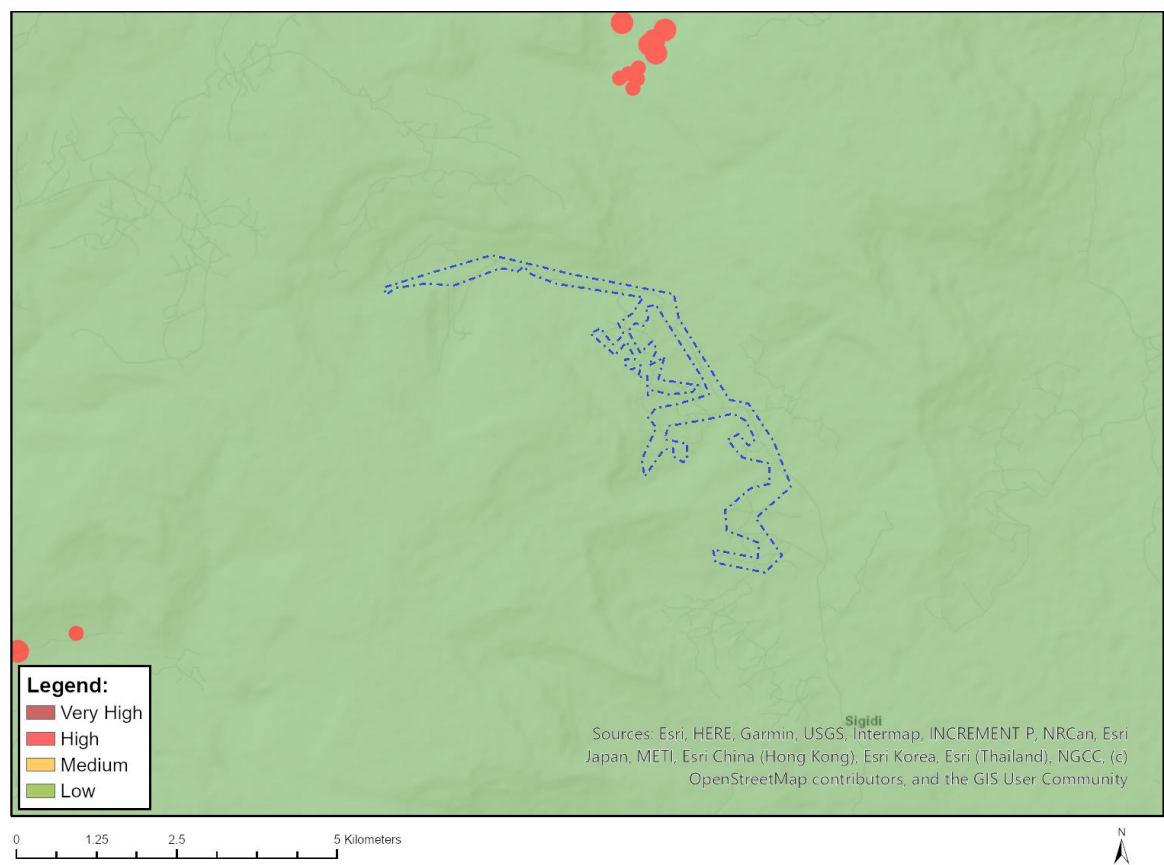


Very High sensitivity	High sensitivity	Medium sensitivity	Low sensitivity
X			

Sensitivity Features:

Sensitivity	Feature(s)
Very High	ESA 1
Very High	ESA 2
Very High	Rivers
Very High	SWSA (sw)_Eastern Cape Drakensberg

MAP OF RELATIVE ARCHAEOLOGICAL AND CULTURAL HERITAGE THEME SENSITIVITY

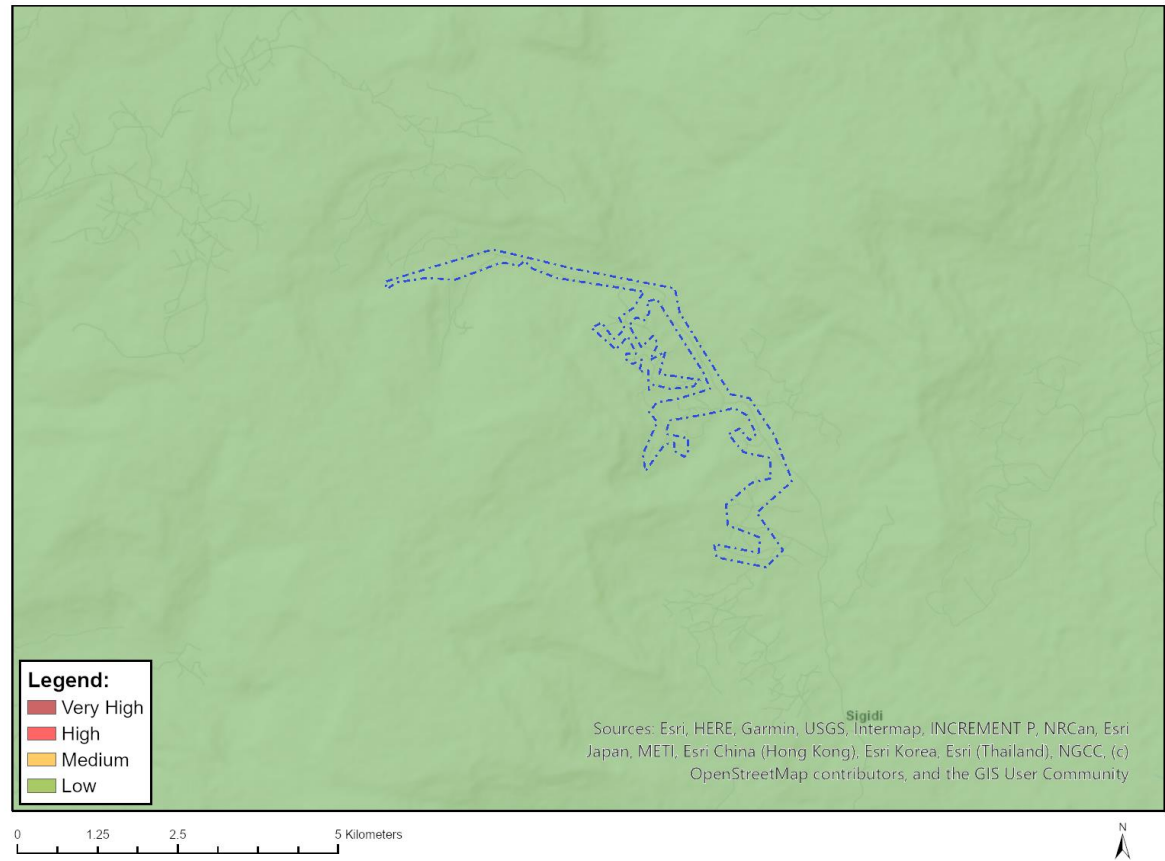


Very High sensitivity	High sensitivity	Medium sensitivity	Low sensitivity
			X

Sensitivity Features:

Sensitivity	Feature(s)
Low	Low Sensitivity

MAP OF RELATIVE CIVIL AVIATION THEME SENSITIVITY

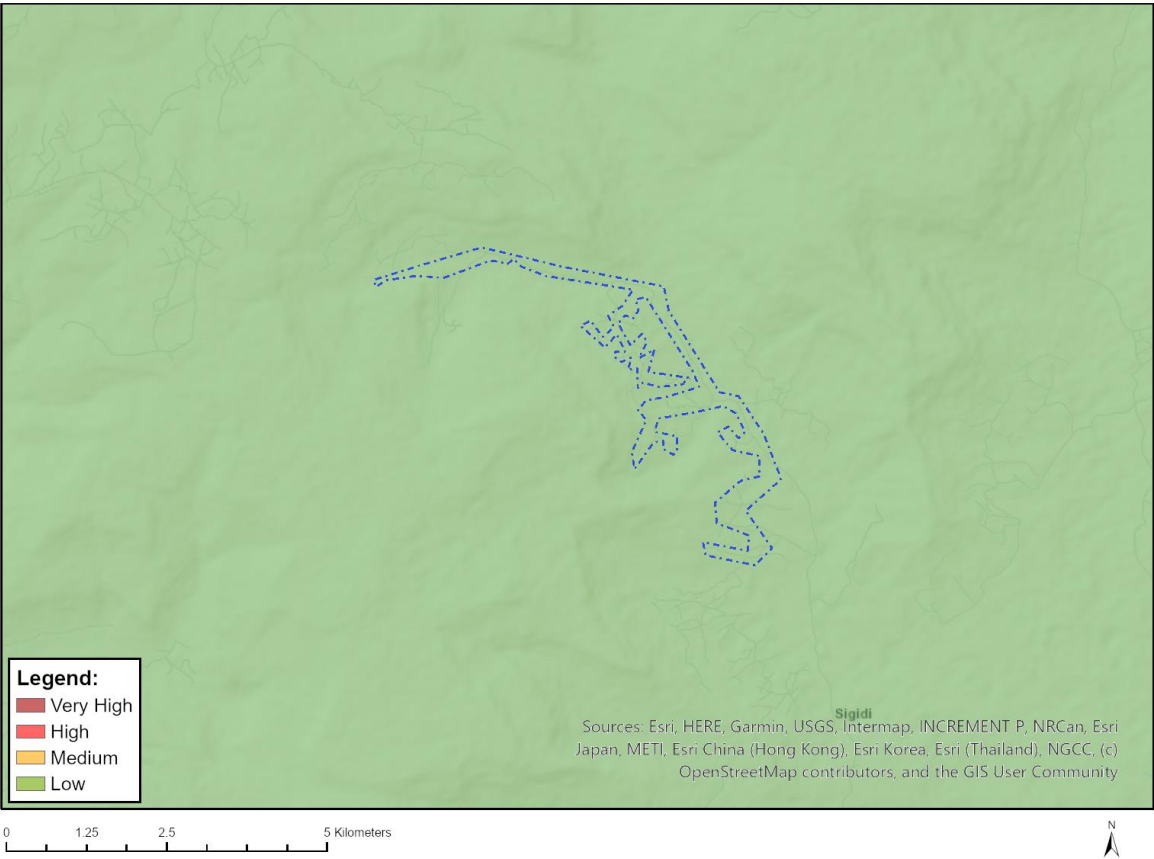


Very High sensitivity	High sensitivity	Medium sensitivity	Low sensitivity
			X

Sensitivity Features:

Sensitivity	Feature(s)
Low	Low sensitivity

MAP OF RELATIVE DEFENCE THEME SENSITIVITY

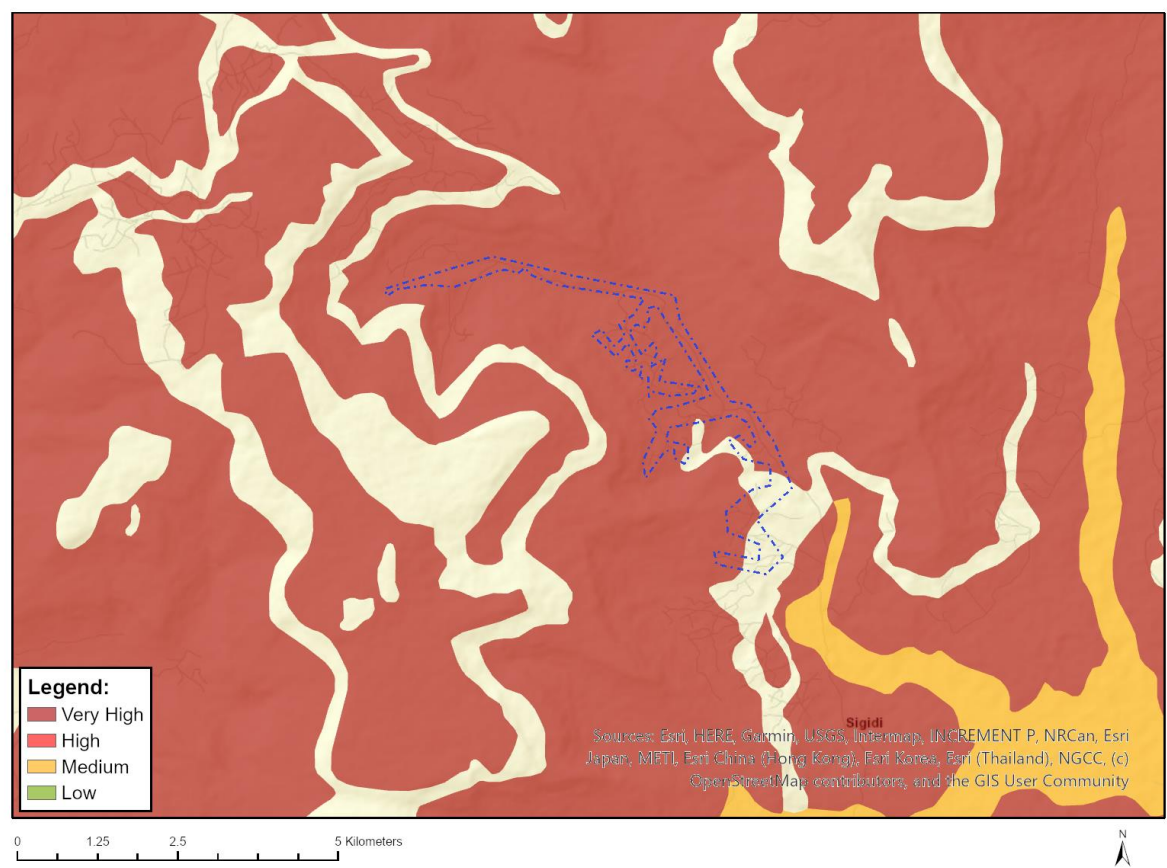


Very High sensitivity	High sensitivity	Medium sensitivity	Low sensitivity
			X

Sensitivity Features:

Sensitivity	Feature(s)
Low	Low Sensitivity

MAP OF RELATIVE PALEONTOLOGY THEME SENSITIVITY

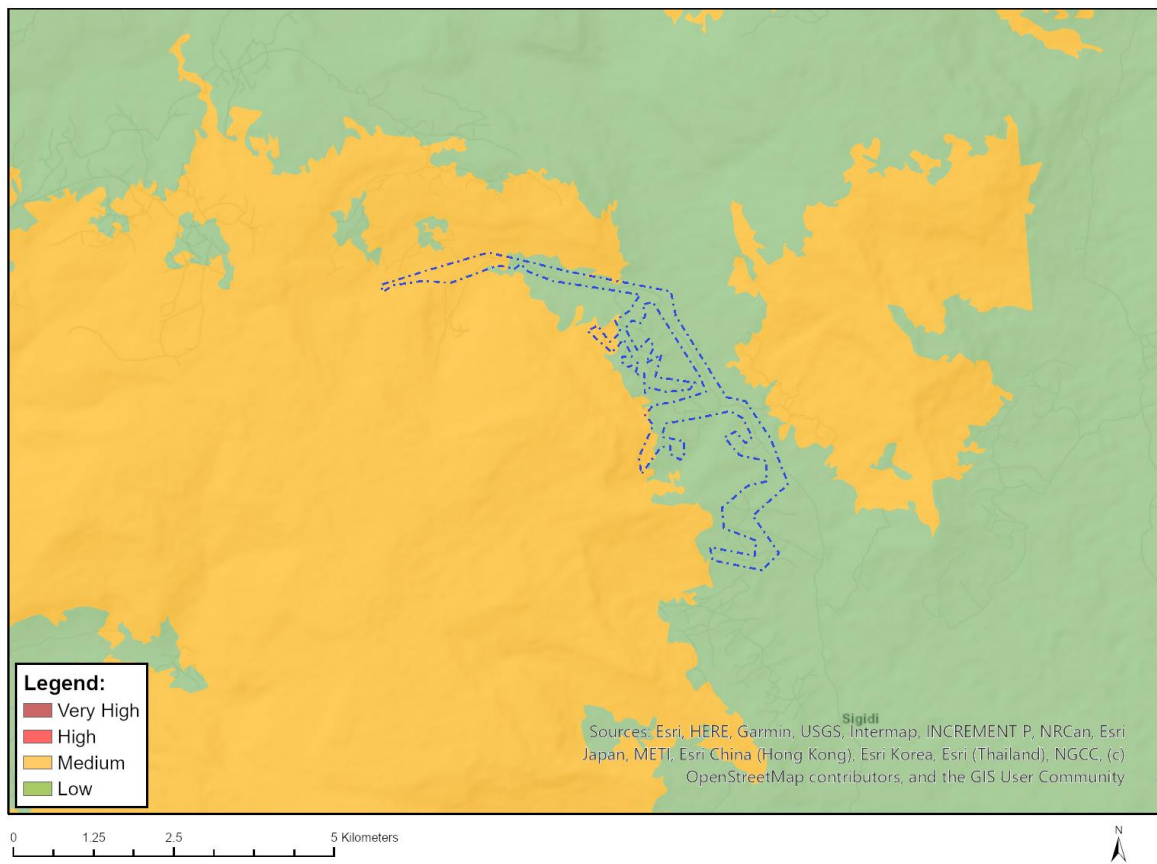


Very High sensitivity	High sensitivity	Medium sensitivity	Low sensitivity
X			

Sensitivity Features:

Sensitivity	Feature(s)
Very High	Features with a Very High paleontological sensitivity

MAP OF RELATIVE PLANT SPECIES THEME SENSITIVITY



Where only a sensitive plant unique number or sensitive animal unique number is provided in the screening report and an assessment is required, the environmental assessment practitioner (EAP) or specialist is required to email SANBI at eiadatarequests@sanbi.org.za listing all sensitive species with their unique identifiers for which information is required. The name has been withheld as the species may be prone to illegal harvesting and must be protected. SANBI will release the actual species name after the details of the EAP or specialist have been documented.

Very High sensitivity	High sensitivity	Medium sensitivity	Low sensitivity
		X	

Sensitivity Features:

Sensitivity	Feature(s)
Low	Low Sensitivity
Medium	Ocotea bullata
Medium	Sensitive species 1252
Medium	Sensitive species 662
Medium	Sensitive species 609
Medium	Sensitive species 535
Medium	Sensitive species 554
Medium	Sensitive species 451
Medium	Sensitive species 1248
Medium	Prunus africana

MAP OF RELATIVE TERRESTRIAL BIODIVERSITY THEME SENSITIVITY



Very High sensitivity	High sensitivity	Medium sensitivity	Low sensitivity
X			

Sensitivity Features:

Sensitivity	Feature(s)
Very High	CBA1
Very High	CBA2
Very High	ESA2
Very High	SWSA (sw) Eastern Cape Drakensberg
Very High	EN_Mthatha Moist Grassland